

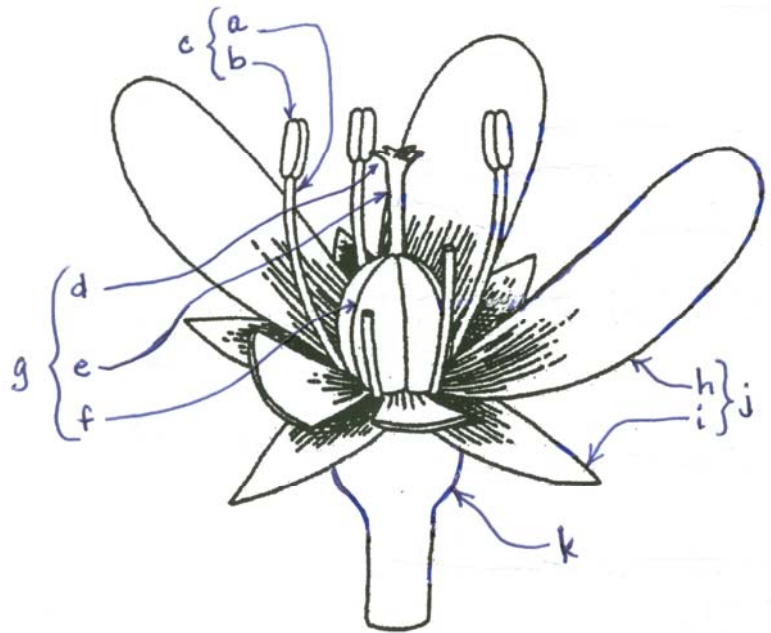
Name or UTEID: \_\_\_\_\_ Date: \_\_\_\_\_

BIO 406D Native Plants  
Spring 2005 – Wednesday Lab  
QUIZ #1 – Vegetative and Reproductive Plant Morphology

**Instructions:** Each blank is worth one point (30 points total). Don't forget the extra credit questions at the end! Questions 12-20 (indicated with \*\*) have a station in the lab with a plant to look at to help you answer the question.

1. Write the name for the flower parts indicated in the picture below in the corresponding blank to the left. (11 points)

- a. filament
- b. anther
- c. stamen / androecium
- d. stigma
- e. style
- f. ovary
- g. pistil / gynoecium
- h. petals / corolla
- i. sepals / calyx
- j. perianth
- k. receptacle



\_\_\_\_\_tuber \_\_\_\_\_ 2. What type of stem modification is a potato?

\_\_\_\_\_seeds \_\_\_\_\_ 3. Matured ovules are called what?

\_\_\_\_\_berry \_\_\_\_\_ 4. Grapes are fleshy fruits with a single ovary, multiple seeds, and lacking a hard rind. Grapes are what type of fruit?

\_\_\_\_\_inferior \_\_\_\_\_ 5. In the photo to the right, what is the ovary position?

\_\_\_\_\_b \_\_\_\_\_ 6. Which of the following describes a **dicot**?

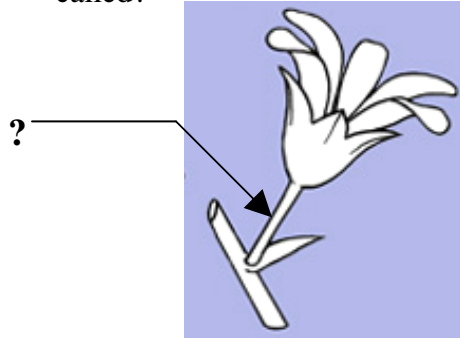
- a. a flowering plant with one cotyledon, parallel leaf venation, and flower parts in whorls of 3
- b. a flowering plant with two cotyledons, reticulate leaf venation, and flowering parts in whorls of 4 or 5



\_\_\_epiphyte\_\_\_\_\_ 7. What plant habit or plant growth form do we call “a plant that grows on another plant but does not get food or water from it”?

\_\_\_node\_\_\_\_\_ 8. What is the “position on the stem where leaves or branches originate” called?

\_\_\_pedicel\_\_\_\_\_ 9. As in the picture below, what is the “stalk of a single flower in an inflorescence” called?



\_\_\_incomplete\_\_\_\_\_ 10. A flower “lacking one or more parts” is said to be what?

\_\_\_head\_\_\_\_\_ 11. What **type of inflorescence** does this sunflower in the Asteraceae family have (described as a “dense cluster of flowers”) ? \_\_\_\_\_



\_serrate or dentate \_ 12. What **leaf margin** does this plant have? \*\*

\_\_\_fibrous\_\_\_\_\_ 13. What **type of root** does this grass have? \*\*

bipinnately compound 14. *Acacia* – What **leaf complexity** does this plant have? \*\*

\_\_\_ovate \_\_\_\_\_ 15. What **leaf shape** does this plant have? \*\*

reticulate / palmate \_ 16. What type of **leaf venation** does this plant have? \*\*

\_\_\_glabrous\_\_\_\_\_ 17. *Ligustrum japonicum* – How is the **leaf surface** of this plant described? \*\*

\_\_\_prickle\_\_\_\_\_ 18. What do we call the **plant defense** on the stems of this *Acacia*? \*\*

\_\_\_whorled\_\_\_\_\_ 19. *Galium aparine* – What **leaf arrangement** does this plant have? \*\*

\_\_\_actinomorphic\_\_ 20. *Vinca* – What kind of **symmetry** does this flower have? \*\*

**EXTRA CREDIT**

\_\_\_Plantae\_\_\_\_\_ EC#1 – What kingdom of organisms are we studying in this lab? (1 point)

EC#2 – The scientific name for the Live Oak tree is Family: fagaceae, Genus: quercus, Specific Epithet: fusiformis. Write it in the correct scientific notation below as you will on future field quizzes? (1 point)

Family	Genus	Specific epithet
Fagaceae	<u>Quercus</u>	<u>fusiformis</u>