

Fig. 278. Diagrammatic representation of a section of mature cuticle and epidermis.

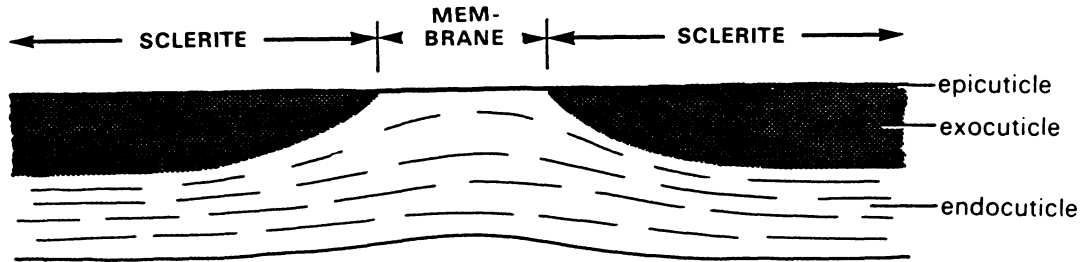


Fig. 281. Diagrammatic section through the cuticle showing a flexible membranous region between two rigid sclerites.

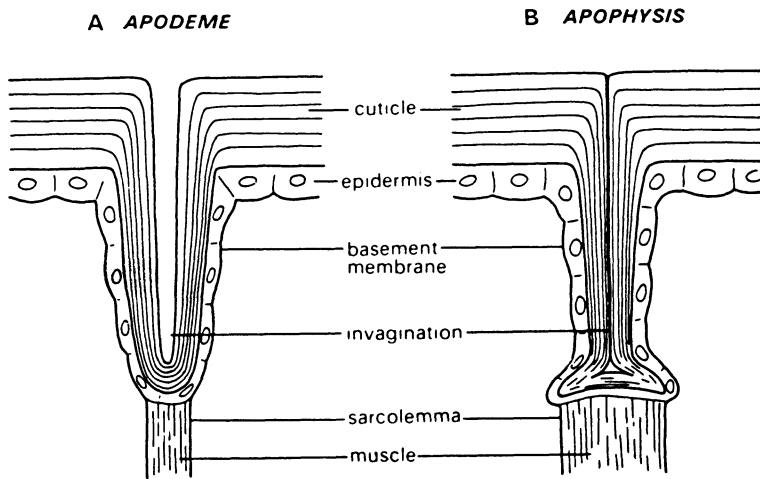


Fig. 284. Diagram of cuticular invaginations forming (A) an apodeme and (B) an apophysis (after Richards, 1951).

Cuticle

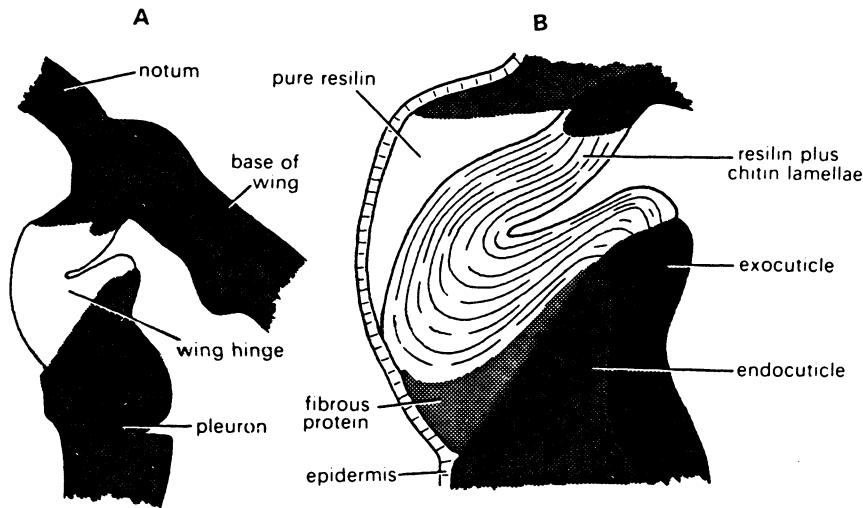


Fig. 286. A. Transverse section through the thoracic wall of *Schistocerca* showing the base of the wing and the wing hinge. B. Section through the wing hinge enlarged (modified after Anderson and Weis-Fogh, 1964).

Chapman, Reginald Frederick  
The insects: structure and function  
(Biological science texts)

Bibliography: p.  
Includes indexes.  
1. Insects. I. Title.  
QL463.C48 1976 595.7 76-2  
ISBN 0-444-19456-8

**Figure 2.5** Molting process. (a) Mature cuticle. (b) Apolysis. (c) New outer epicuticle produced. (d) Endocuticle digested. (e) Molting fluid resorbed and cuticle splits along ecdysial cleavage line. (f) New cuticle.

