

PHYLUM ARTHROPODA

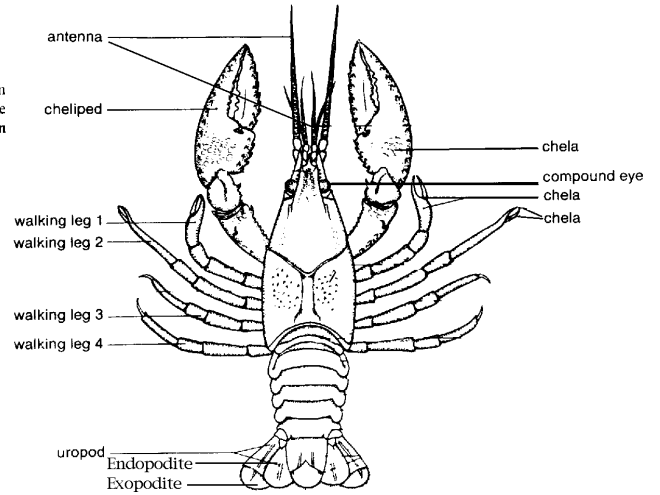
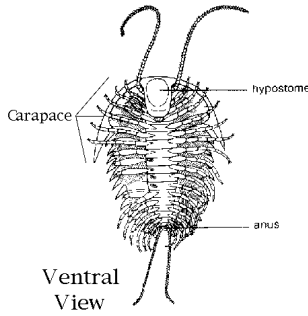
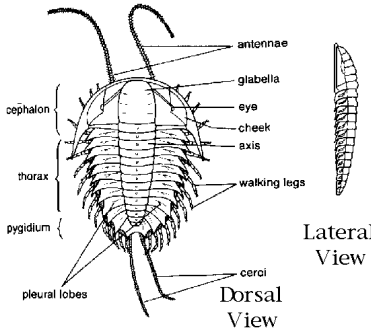
Figures from: Wallace, R.L. et al., 1989. Beck and Braithwaite's Invertebrate Zoology: A Lab Manual. Macmillan Publ. Co. NY.

SubPhylum Crustacea

Subphylum Trilobita

Trilobita (tri-lo-BI-ta; L., *tri*, three + *G., lob*, lobe) is a moderately sized group of about 15,000 extinct species of primitive, dorsoventrally flattened arthropods with

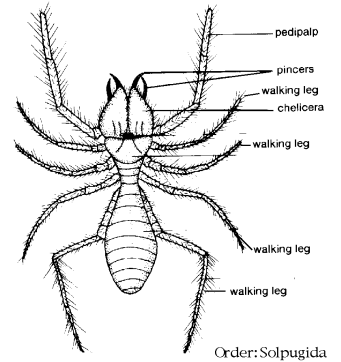
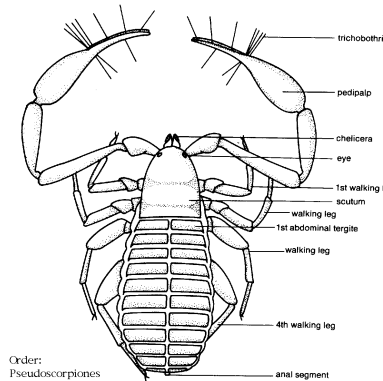
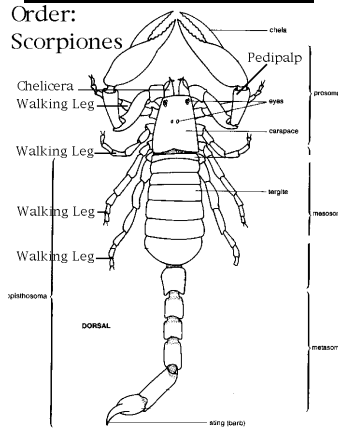
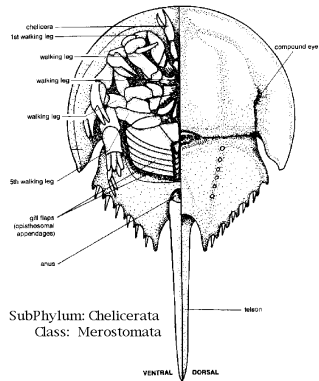
a chitinous exoskeleton strengthened with calcium and phosphate deposits. These marine animals were most abundant during the Cambrian and Ordovician



SubPhylum Chelicerata

Class Merostomata

Class Arachnida



SubPhylum Atelocerata

Class Chilopoda

Class Hexapoda

